



# Sanderling Recovery Project Update

---

April 2026

---



**RYDE**  
TOWN COUNCIL



Isle of Wight  
Council



# Overview

## What

Recovery of Sanderling across the Ryde Sands SSSI, to support function and sustainability of last remaining roost area

## Why

Important Solent population that roosts each winter, but increasingly under threat b public disturbance - potentially resulting in loss of Island population  
Important for SSSI condition improvement, and delivery of the LNRS

## How

Partnership working, creation of Bird Protection Area, signs and buoy deployment, research and data collection, work towards PSPO

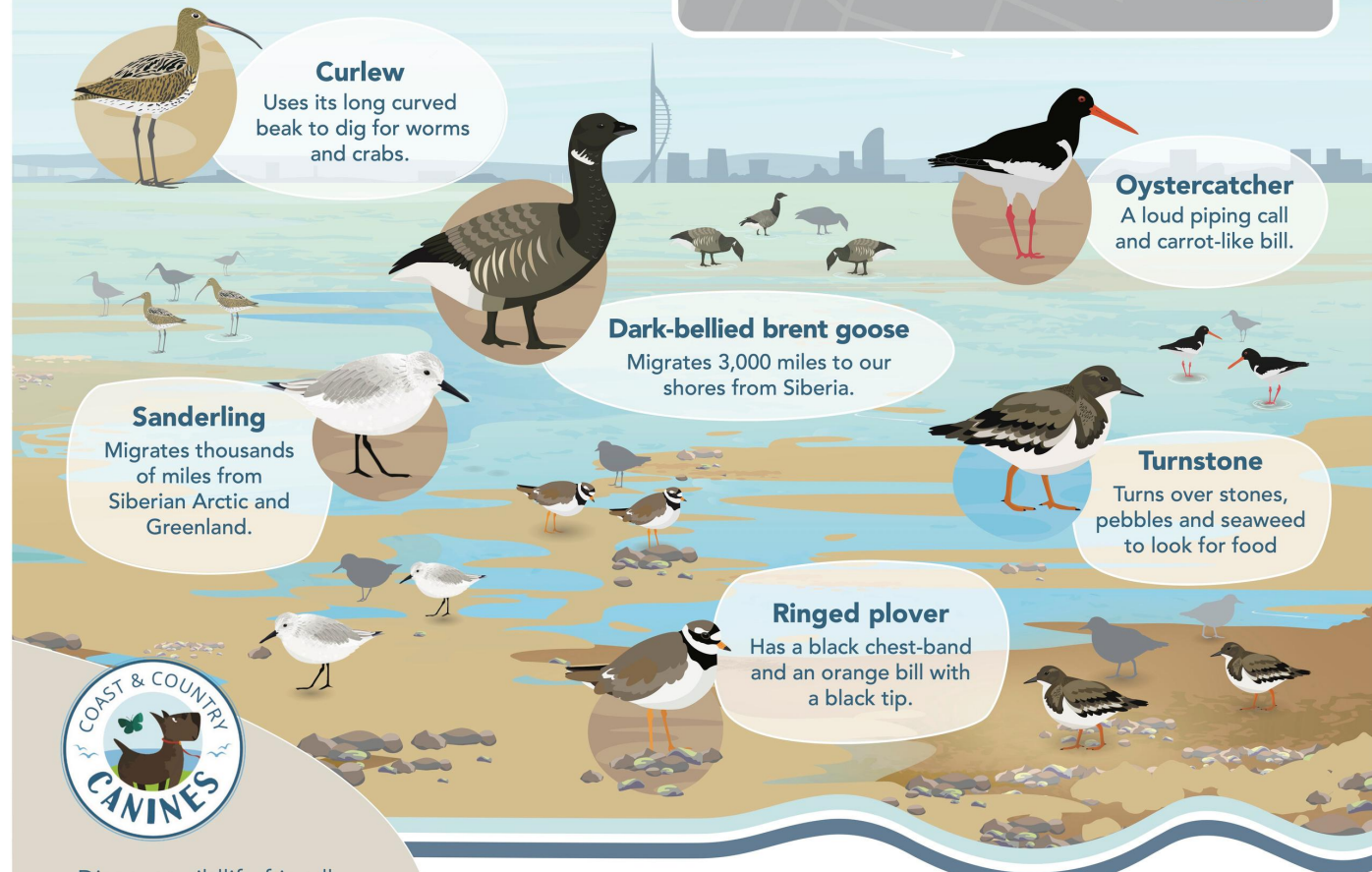
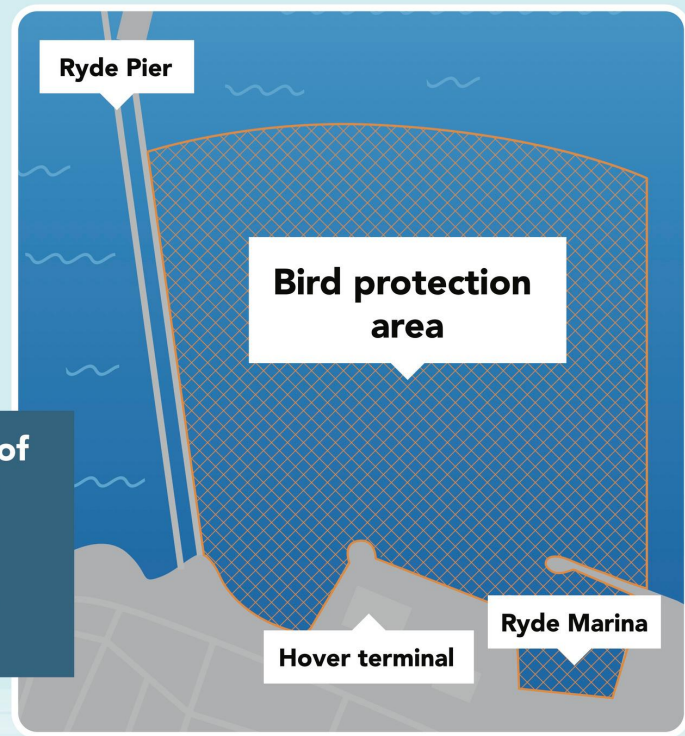


# Ryde Sands Bird Protection Area

The Ryde Sands Bird Protection Area has been created to provide a safe space for our coastal birds to feed and rest undisturbed.

Thanks to everyone for keeping out of the Ryde Sands Bird Protection Area between September to April.

This helps the birds stay safe, giving them the best chance to thrive.



**Curlew**  
Uses its long curved beak to dig for worms and crabs.

**Dark-bellied brent goose**  
Migrates 3,000 miles to our shores from Siberia.

**Sanderling**  
Migrates thousands of miles from Siberian Arctic and Greenland.

**Ringed plover**  
Has a black chest-band and an orange bill with a black tip.

**Turnstone**  
Turns over stones, pebbles and seaweed to look for food

**Oystercatcher**  
A loud piping call and carrot-like bill.



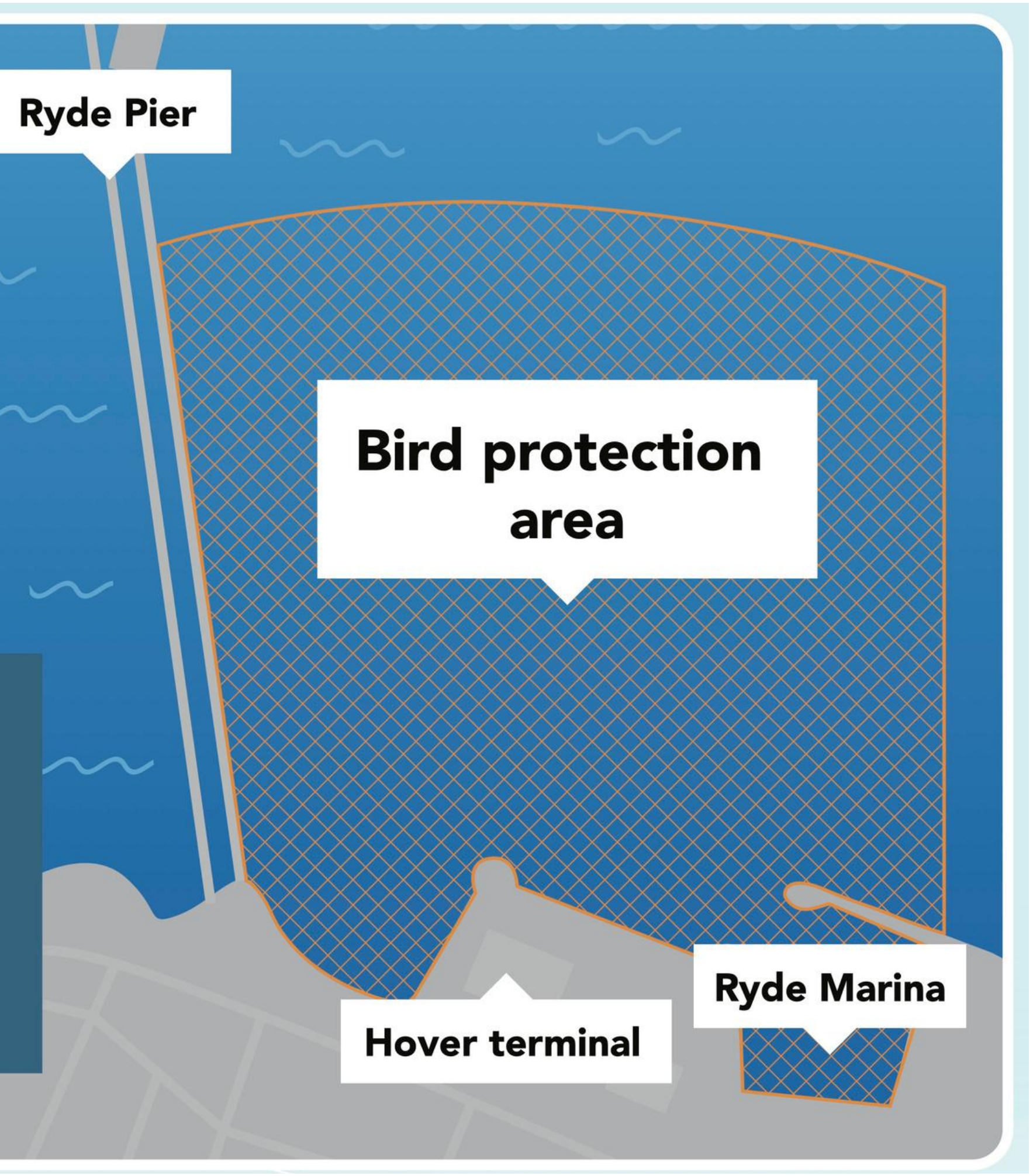
Discover wildlife-friendly dog walking routes, as well as Coast and Country Canines' training tips and games:



SCAN HERE

The Ryde Sands Bird Protection Area is dedicated in memory of local conservationist and wildlife supporter Jim Baldwin

[www.birdaware.org/solent](http://www.birdaware.org/solent)



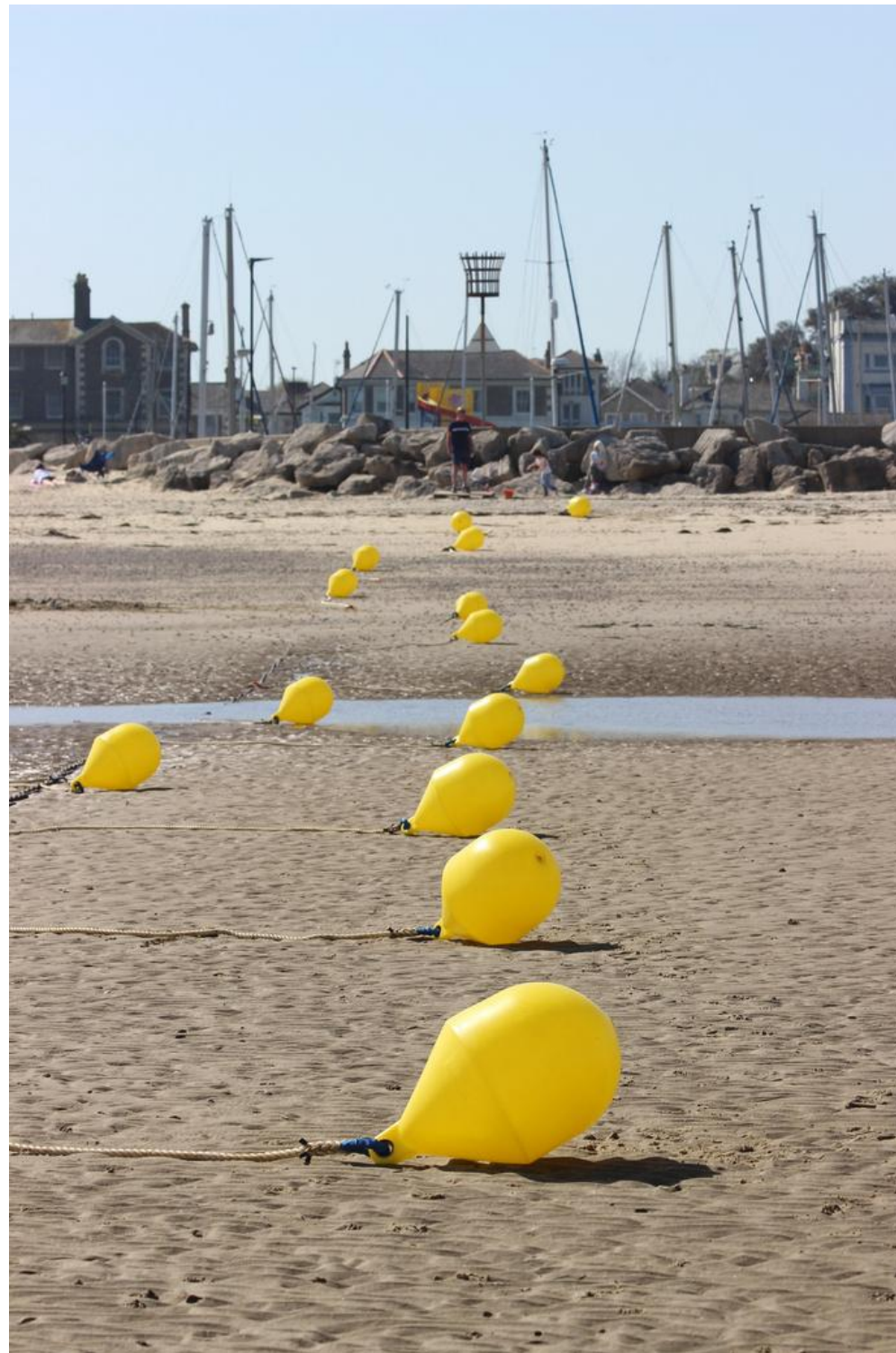
Ryde Pier

Bird protection area

Hover terminal

Ryde Marina

# Project Updates



01

Buoys

02

Signs

03

Access limitation

04

Website

05

Survey data and beach profile analysis

06

Engagement



# Project Plan: 2026-2027

01

Engagement

02

Hersey Reserve

03

Cross-Solent working

04

Beach profile & dredging -  
industry engagement and R&D

05

Historic Ryde Roost

06

Annual Reporting

