



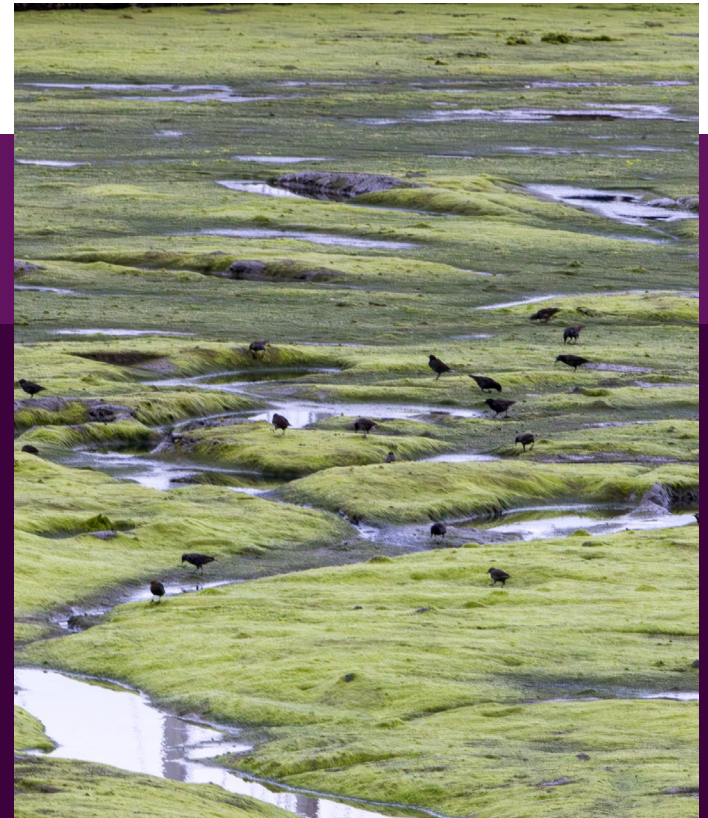
UNIVERSITY OF
PORTSMOUTH



When is a wading bird not a wading bird? The case of the European Starling.

Prof. Gordon Watson

RAs: Kristy Johnson & Cecilia Laverty



The Scientific Approach



"The most exciting phrase to hear in science, the one that heralds new discoveries, is not 'Eureka!' but 'That's funny...'"

Isaac Asimov

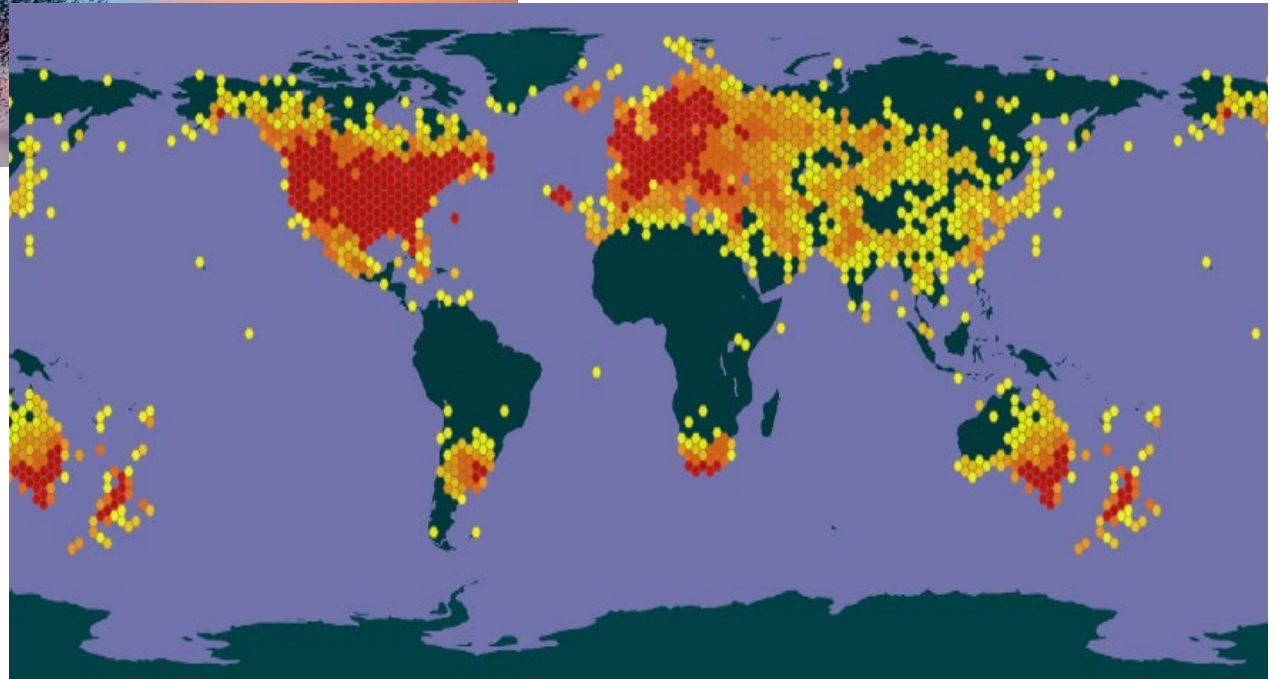
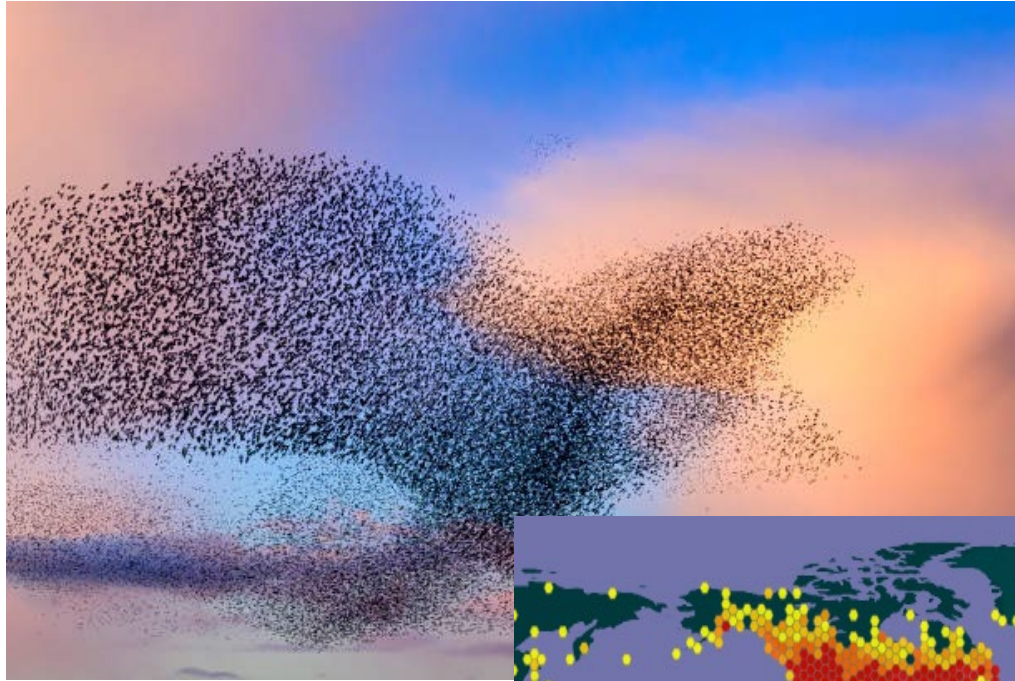
My weird



Background

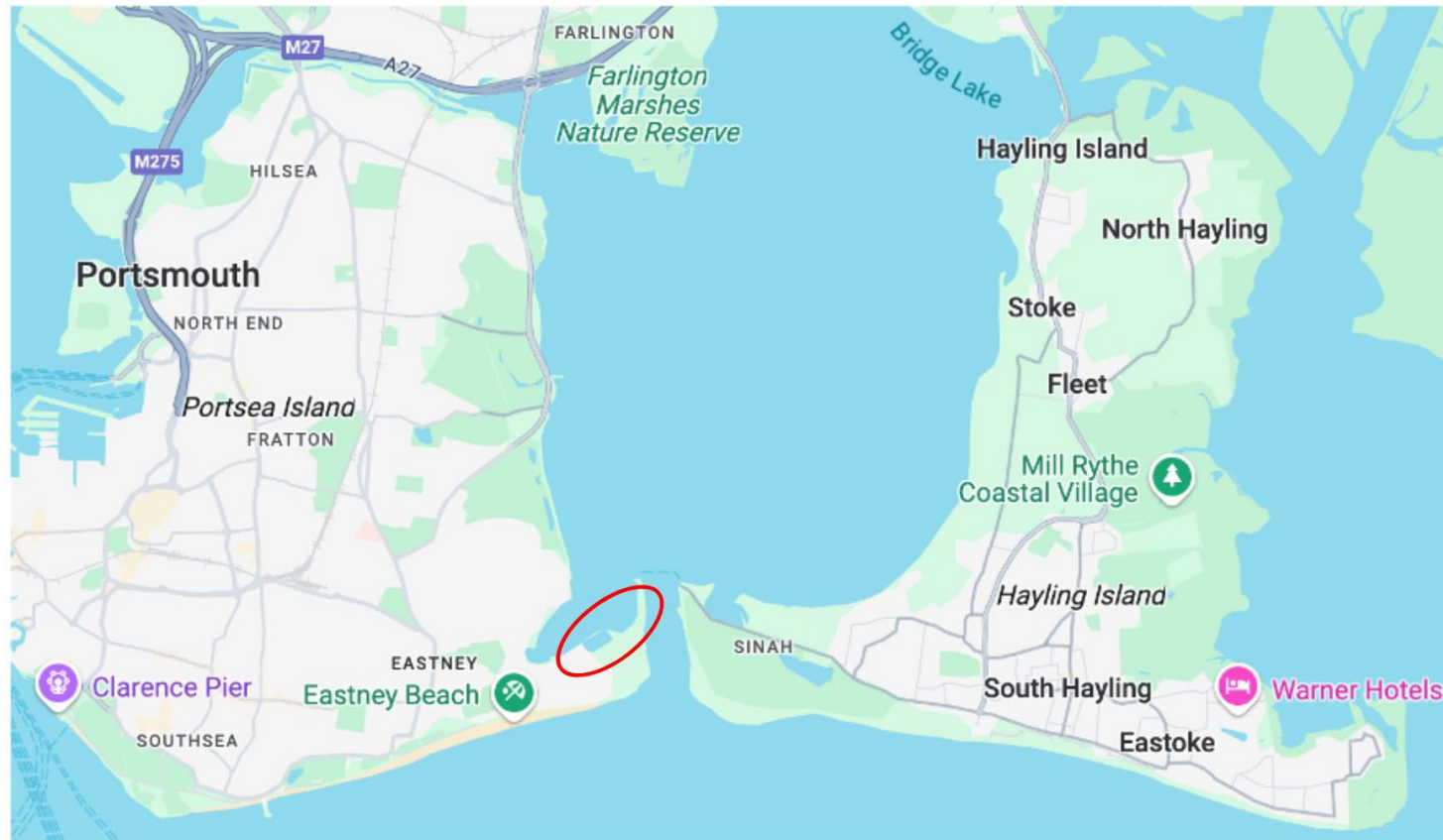


Background



Summary of Methods - Approach

Research Location: Intertidal mudflats west-side of the Institute of Marine Science Labs



Summary of Methods - Approach



Laboratory C, Institute of Marine Sciences

Summary of Methods - Approach



Camera A



Camera B

Methods – Data Processing

Over time period 31 July 2024 – 31 October 2024 – **total of 87,449**

Images manually reviewed and **refined**

Images put into daily **timelapse sequence videos**



Preliminary Results



Preliminary Results

Completed to September 2024

**Presence of starlings
confirmed**

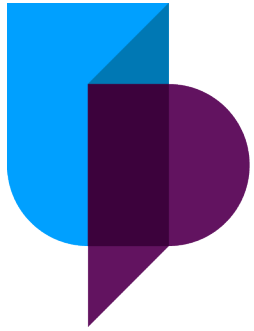
Feeding Behaviours Observed:



Starlings seen on intertidal mud flat

Next Steps





UNIVERSITY OF
PORTSMOUTH

Acknowledgements